



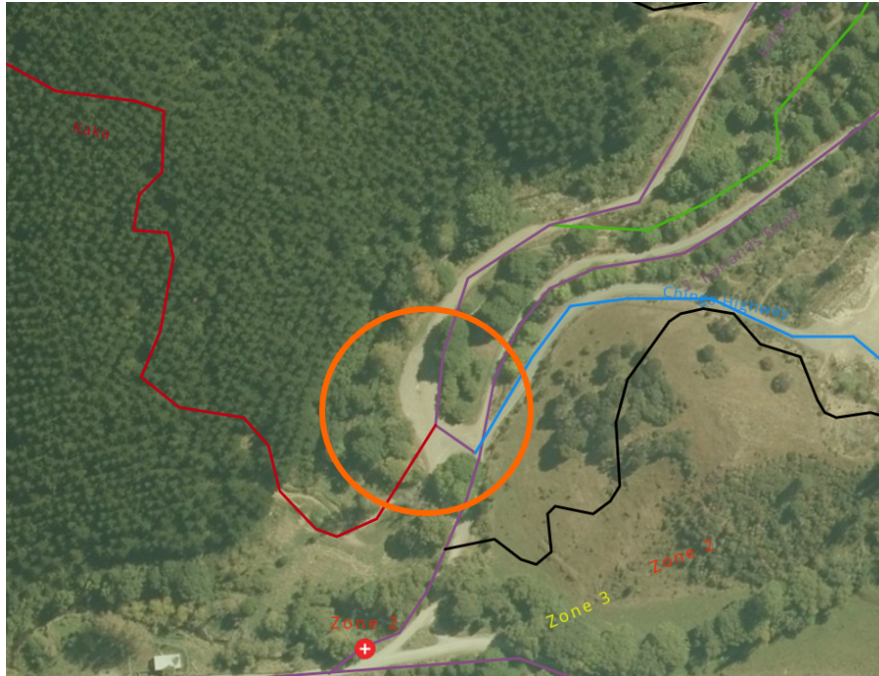
Presents

NMTBC Downhill Series 2021
Round 3
Kaka



Date and time: 25th July 2021 at 8am

Event Location: Kaka Carpark, Sharlands Mountain Bike Park



Key Contact:

events@nelsonmtb.club

Entries and Race Registration:

Enter online via the link on NMTBC Website Calendar. Online entries open 12th July 2021 and close 23rd July 2021 at 11.30pm. Late or on the day entries will be accepted. On the day, registration will take place at Kaka car park in Sharlands Mountain Bike Park.

Entrants can be a member of any NZ cycling club.

Entry fee: \$30 youth (under 19), \$40 adult (19+).

Don't forget your Race plates if you have raced at previous rounds

Course Map: Kaka

Rider Information

Timing and Number Plates:

All riders will be given a timing chip at registration on the day. All timing chips to be returned. There is a \$100 fee for timing chips not returned.

Categories:

Under 13 Male

Under 13 Female

Under 15 Male

Under 15 Female

Under 17 Male

Under 17 Female

Under 19 Male

Under 19 Female

Open Male (19+)

Open Female (19+)

Masters 1 (30-39)

Masters 2 (40-49)

Master 3 (50-59)

Event Day Schedule:

7am - 8am: Arrival. Parking at Kaka car park available until gate closes 8am.

8am - 9am: Registration

9am - 12pm: Practice

12pm - 1pm: Lunch

1pm - 2pm: Seeding

2pm - 3pm: Race Run

3.30pm: Prize Giving. Gate opens at 3pm when event ends.

Rules and Equipment:***U17 & U15***

All entrants must wear Knee protection, Neck Brace and a Full face helmet. Entrants without these compulsory items will not be allowed to ride. Full finger gloves, Elbow pads and Long sleeves (no singlets) are encouraged.

All other categories

All entrants must wear Knee protection and a Full face helmet. Entrants without these compulsory items will not be allowed to ride. Full finger gloves, Elbow pads, Neck brace and Long sleeves (no singlets) are encouraged.

Medical Provisions:

There will be first aid trained medical support marshals on course during practice, seeding and race runs. Riders are responsible for riding within their abilities and maintaining their own safety. Riders ride at their own risk.

Facilities at the venue:

There will be toilets provided. There will be food and beverages available for purchase by cash only. No cash is available at the event venue. Cellular service at the event venue may be limited.

Cancellation/Postponement

In the event of race cancellation or postponement, entrants will be contacted by email with further information.